

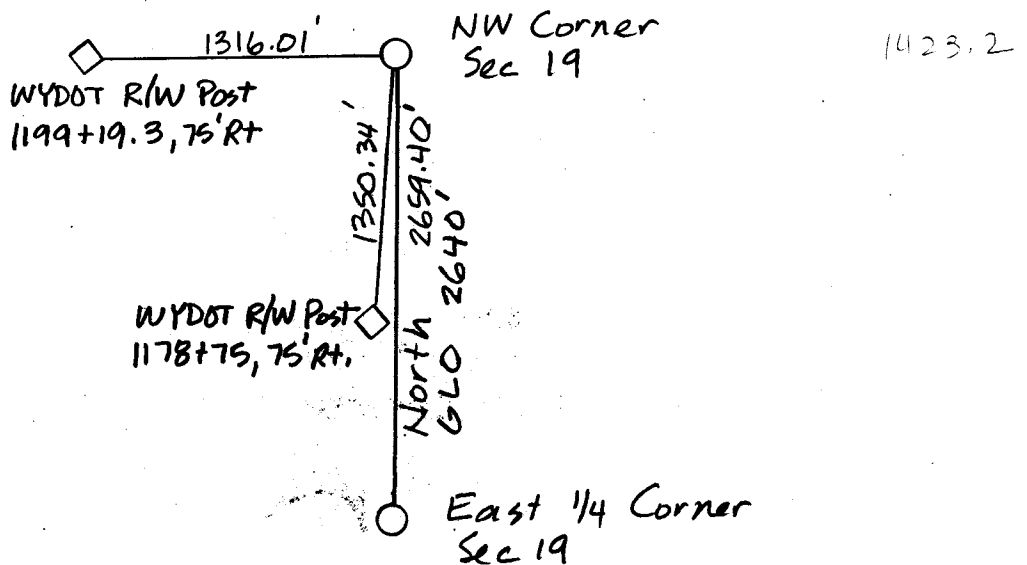
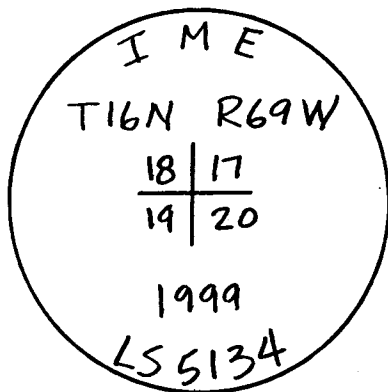
State of Wyoming Corner Record

(In compliance with the *CORNER PERPETUATION AND FILING ACT*, Wyoming Statutes, 1977, Section 36-11-101, et. seq., and the Rules and Regulations of the Board of Registration for Professional Engineers and Professional Land Surveyors)

Reverse side of this form may be used if more space is needed.

Record of original survey and citation of source of historical information (if corner is lost or obliterated). Description of corner monumentation evidence found and/or monument and accessories established to perpetuate the location of this corner. Sketch of relative location of monumen., accessories, and reference points with course and distance to adjacent corner(s) (if determined in this survey). Method and rationale for reestablishment of lost or obliterated corner.

Found stone, disturbed. Stone has 5 scribes on one side, and 3 on adjacent side, which if stood erect would be properly marked. The corner position was remonumented with a $\frac{5}{8}$ " x 24" rebar with a 1 1/2" aluminum cap, from tie distances found on WYDOT as-blt. plans for state hwy 211. The rebar and cap is 2.5' ± West of where stone laid. Stone was buried 1' ± South of rebar and cap.



Date of Field Work: 10-18-99 Office Reference: 879765 (Horse Creek) BK. 541 P. 50

CROSS INDEX DIAGRAM

1	2	3	4	5	6	7	8	9	10	11	12	13	14	15	16	17	18	19	20	21	22	23	24	25
A																								
B																								
C																								
D																								
E																								
F																								
G																								
H																								
I																								
J																								
K																								
L																								
M																								
N																								
O																								
P																								
Q																								
R																								
S																								
T																								
U																								
V																								
W																								
X																								
Y																								
Z																								

Firm/Agency, Address
Inberg - Miller Engineers
124 E. Main St.
Riverton WY 82501

Telephone Number: 307-856-8136

This corner record was prepared by me or under my direction and supervision.
SEAL & SIGNATURE



10-29-99

RECORDED 11/03/1999 AT 12:40 PM REC# 263559 BK# 1538 PG# 398
DEBRA K. LATHROP, CLERK OF LARAMIE COUNTY, WY PAGE 1 OF 1

Corner Name: NE Corner Section: 19 T 16N R 69W 6th P.M. Cross-Index No.: N-5
SBRPEPLS/W: March 1994